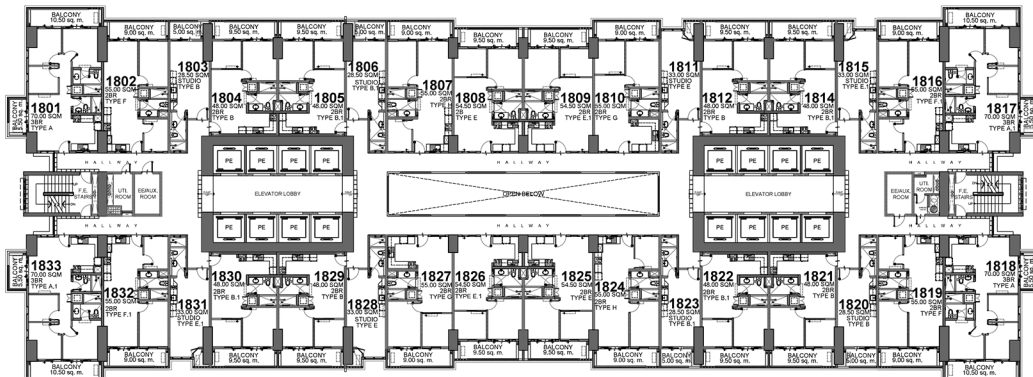


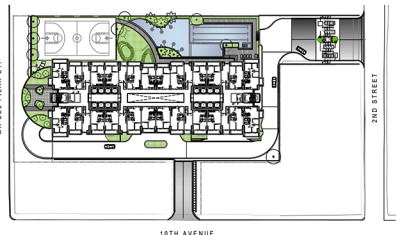
FACING AMENITIES

FACING M.H. DEL PILAR STREET

FACING 2ND STREET



FACING 10TH AVENUE



www.thecalineatower.com/floor-plans

LIST OF POSSIBLE TANDEM UNITS:

- 1807 & 1808
- 1809 & 1810
- 1824 & 1825
- 1826 & 1827

NOTE:

Standard company policy regarding request for tandem shall apply.



18TH FLOOR PLAN

JANUARY 2023

PER MEMO REF. # DE-23-01-008



APPROVED BY:	Phipay	1/11/23
	Nikko	1/12
	Ana	1/12



Disclaimer: Floor plans depicted in this material are for demonstration purposes only and should not be relied upon as final project plans. For announcement purposes only.

AVAILABILITY PLAN