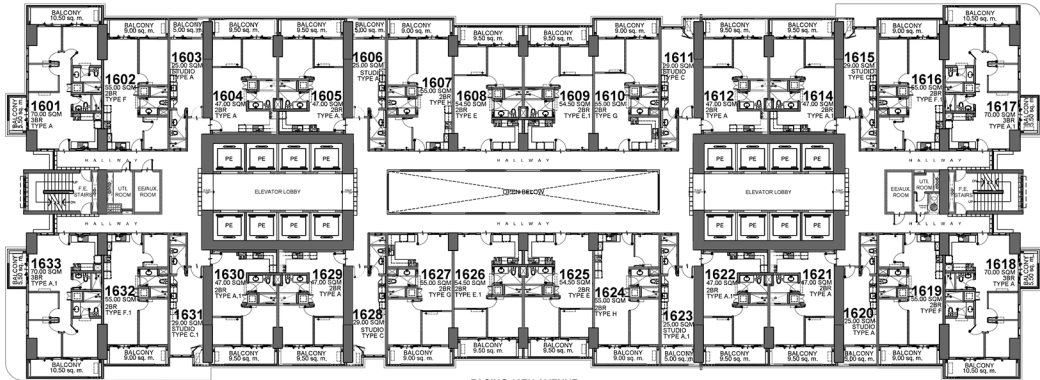


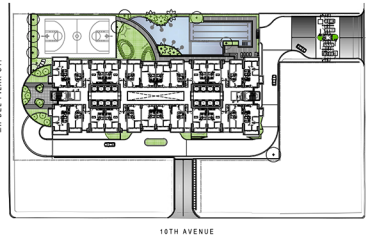
FACING AMENITIES

FACING M.H. DEL PILAR STREET

FACING 2ND STREET



FACING 10TH AVENUE



www.thecalineatower.com/floor-plans

LIST OF POSSIBLE TANDEM UNITS:

- 1607 & 1608
- 1609 & 1610
- 1624 & 1625
- 1626 & 1627

NOTE:

Standard company policy regarding request for tandem shall apply.



16TH FLOOR PLAN

JANUARY 2023

PER MEMO REF. # DE-23-01-008



APPROVED BY:	Phipay	SPW	1/11/23
	Nikko		1/11
	Ann		1/12



Disclaimer: Floor plans depicted in this material are for demonstration purposes only and should not be relied upon as final project plans. For announcement purposes only.

AVAILABILITY PLAN